

Visual Story

# Your visit to the Museum of Archeology at Palace Green Library



# Meet the Learning and Engagement team!

There are 10 members of the Learning and Engagement Team. You won't be taught by everyone on the day of your visit - maybe 1 or 2 of us, depending how big your group is. This is a picture of everyone. Sometimes we have volunteers and work experience students with us as extra helpers.

We are looking forward to meeting and working with you!



**Ross**



**Charlotte**



**Jo**



**Paddy**



**Liv**



**Caitlin**



**Olivia**



**Michael**



**David**



**Emily**

# Arriving at Palace Green Library

Your coach is not able to bring you all the way to Palace Green, so you will have a short walk from where your coach drops you off, usually at Durham Student Union.



You will have to walk over Kingsgate Bridge. Can you spot the cathedral?



At the end of the bridge are steps that lead up to Bow Lane.



You will then walk up Bow Lane and cross the road to...



...Dun Cow Lane. This leads up to Palace Green where you will see the cathedral and castle.



You will find Palace Green Library  
between the cathedral and the castle.



# Finding your way...

← from Durham Students Union, New Elvet, Durham DH1...  
to Durham University Library, Palace Green, Durham D...

**6 min (0.3 mile)**  
via Kingsgate Bridge  
Mostly flat

⚠ Use caution—walking directions may not always reflect real-world conditions

**Durham Students Union**  
New Elvet, Durham DH1 3AN

- ↑ Walk west on Kingsgate Bridge towards Bow Ln  
466 ft
- ↙ Kingsgate Bridge turns slightly left and becomes Bow Ln  
⚠ Toll road  
249 ft
- ↘ Turn right onto N Bailey  
⚠ Toll road  
62 ft
- ↙ Turn left onto Dun Cow Ln  
253 ft
- ↙ Turn left  
⚠ Toll road  
📍 Destination will be on the left  
299 ft

**Durham University Library**  
Palace Green, Durham DH1 3RN

Map data ©2019 Google United Kingdom Terms Send feedback 50 m

The screenshot displays a Google Maps interface with a walking route highlighted in blue. The route starts at the Durham Students Union (marked with a red pin) and ends at the Durham University Library (marked with a red pin). The route follows Kingsgate Bridge, then turns onto Bow Ln, N Bailey, and Dun Cow Ln. The map shows various landmarks including Durham Castle, Durham Cathedral, and the River Wear. A sidebar on the left provides detailed directions and distance information for each segment of the route. A small satellite inset is visible in the bottom left corner of the map area.



We do not advise driving coaches up to Palace Green as the road is very narrow. If you need to park or be dropped off closer to Palace Green Library for accessibility, we can arrange parking for minibuses or cars on Palace Green.



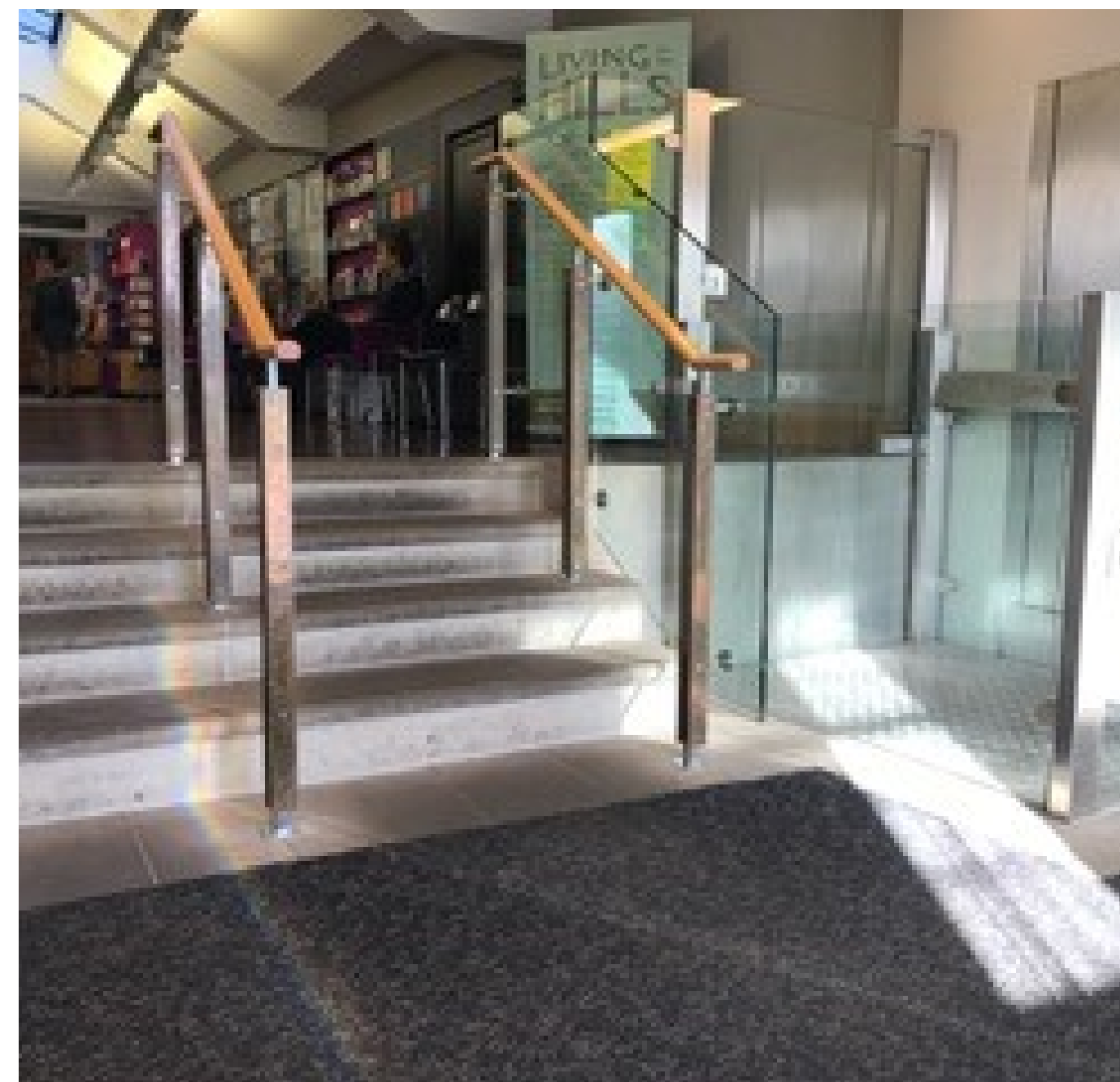
Please do get in touch with your car registration number so we can arrange this for you. If you do not get in touch with us beforehand, you will be charged a congestion fee by Durham County Council for driving on to Palace Green and not be able to leave your vehicle parked there.



# Welcome!

Inside you will need to walk up a few steps to the reception desk. There is a lift here if you need it.

It is not always possible to take photographs of the exhibits so it is always best to check with us first and we can guide you. If you do take photographs, please do not use a flash. You can draw or sketch as well.





All the staff here are really friendly, and if you have any questions they will be happy to help you.

Before you get to our classroom you will come to a small set of steps.

There is also a lift here if you need it.



# Where to put your things?

When you arrive, we will take you to the Learning Centre door to line up...



...Inside you will see a blue trolley for you to put your bag on and hang up your coat.



# Classroom

The Learning Centre is our big classroom. We do some of our teaching in this room and other parts of the day will be spent in the gallery.

There are also toilets in this room for you to use during the day.

When you first arrive, you will be asked to sit down so that we can say a proper hello to you and tell you about the day.



# Accessibility



There is a male and a female toilet in the Learning Centre.



The lights in the toilets are bright. The lights don't come on until you go into the toilet cubicle, so don't worry if that takes a moment to happen.



There are stairs at various points in the building, and always a lift to use if you need it. The lifts can be a bit noisy to use.



There is an accessible toilet near the reception desk which we can guide you to if you need it.



# Museum of Archaeology

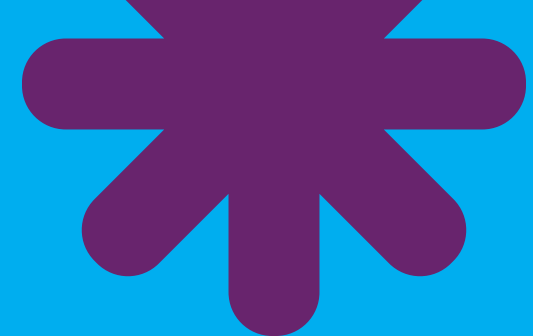


The Museum of Archaeology is temporarily displaying highlights from our Prehistory and Romans collections. The main gallery, upstairs, is currently undergoing renovations.

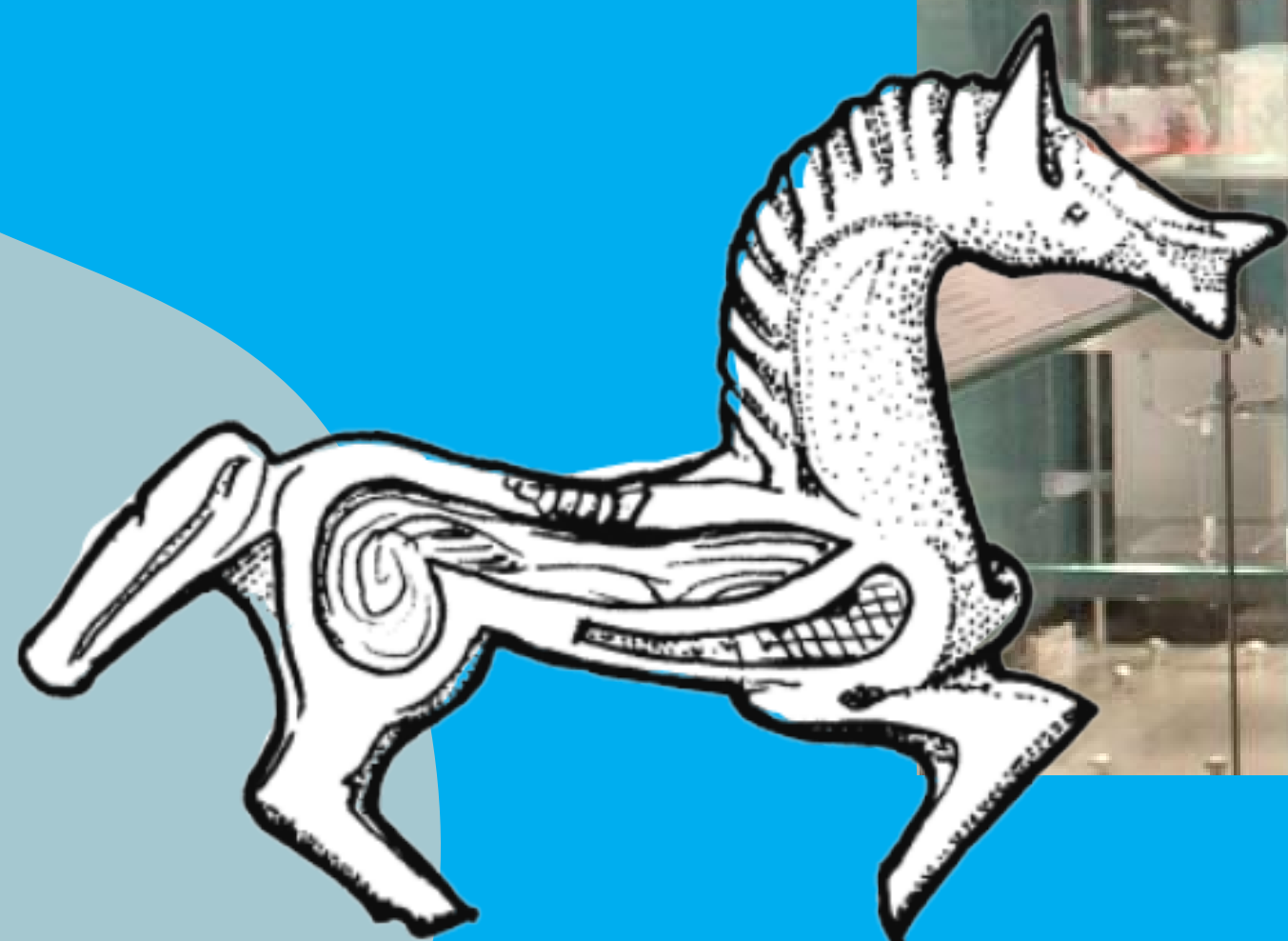
This gallery is on the ground level.

You would use this gallery if you were visiting to learn about Prehistory or the Romans!





This picture shows the other side of the Museum of Archaeology which displays our Roman Collection.





# Cosin's Library



This is Cosin's Library.

You would use this library if you were visiting to learn about Durham and Palace Green. To get to this room there are some steps.



# Lunchtime!



After washing your hands, you will have your lunch in the Learning Centre. If it is a sunny day and your teacher and class would like to, you can sit on the grass on Palace Green and have a picnic.



There will be a bin for you to put your rubbish in.

# Fire alarm

The fire alarm is a loud siren noise. If you hear the fire alarm, we need you to line up quickly and quietly so we can lead you and your teachers out of one of the fire exits. We wait on the grassy area on Palace Green which you will see as you arrive at the beginning of your day.





# Enjoy your visit!

If you or your teachers have any questions or concerns, do please get in touch with us and we will be very happy to answer them.



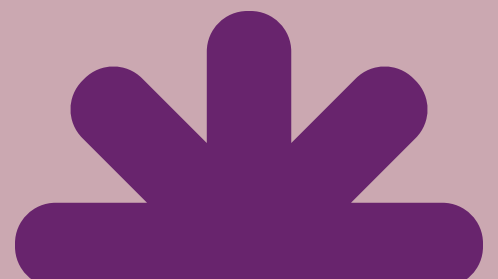
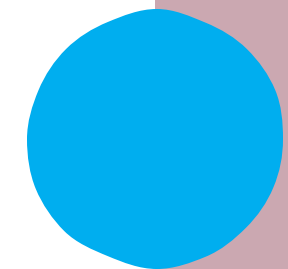
[4schools@durham.ac.uk](mailto:4schools@durham.ac.uk)



(0191) 334 2993/ 5695



[dur.ac.uk/4schools](http://dur.ac.uk/4schools)  
[dur.ac.uk/palace.green](http://dur.ac.uk/palace.green)





We can't wait to  
meet you!

