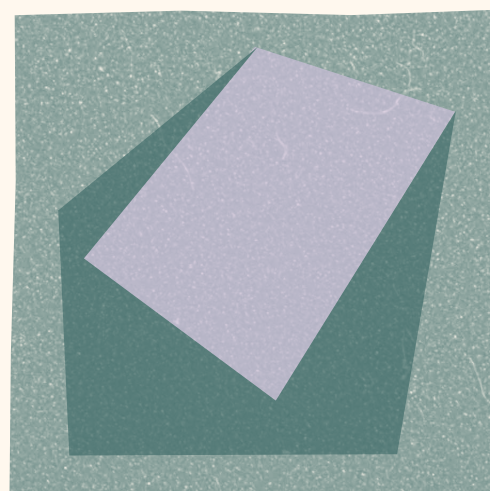
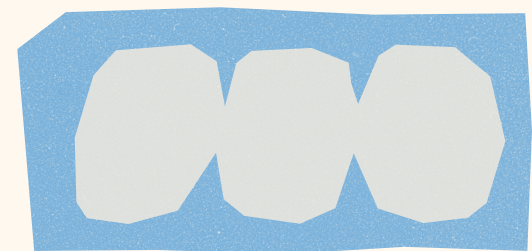


# BEAMISH MUSEUM

Discover, Create and Celebrate

Beamish is an open-air living museum in County Durham, telling the story of everyday life in the North East of England through time. From the Georgian countryside to the 1900s colliery village and 1950s town, the museum brings history to life through working trams, traditional shops, family homes, and immersive experiences.

The museum isn't just a place of the past but rather a living, breathing space for new memories, shared creativity, and cultural pride. From delicious food and dance performances to vibrant art workshops and heritage exhibitions, Beamish welcomes everyone.

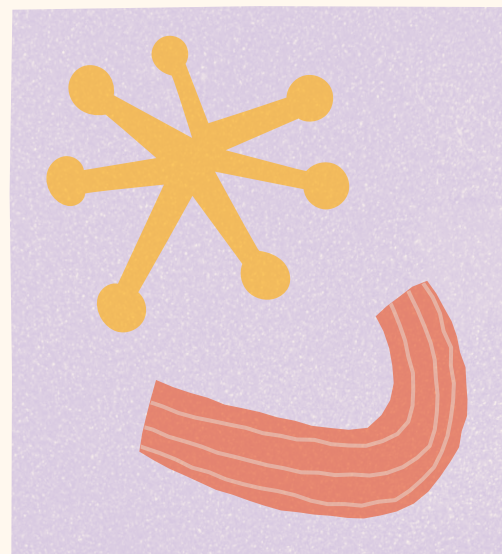
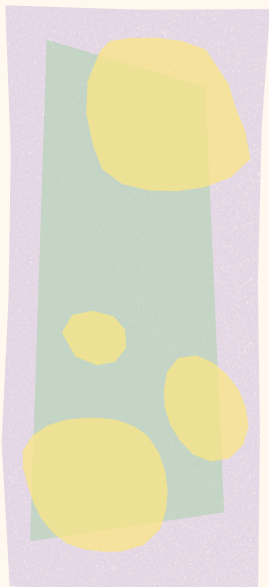




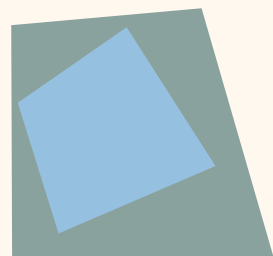
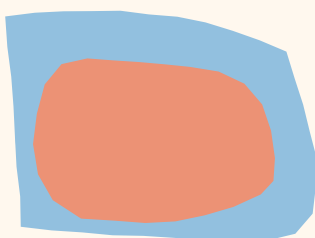
## Food, Family and Memory

Whether you want to enjoy some traditional fish and chips, or simply visit the vintage sweet shop filled with childhood favourites, food is at the heart of Beamish Museum and a way for us to explore shared history. At special events such as **Our South Shields: Thanks For The Memory** project and the **International Society for Evolution, Medicine & Public Health** conference, guests have also shared in the joy of traditional South Asian dishes.

These moments reflect Beamish's commitment to honouring the diverse heritage that shaped everyday life in the North East. It's a celebration of how food carries stories of migration, family and a sense of belonging across time and place.



Photography by Gavin Joynt & Babir Singh



SCAN ME

For more information about Beamish Museum and our upcoming events, visit our website at:

<https://www.beamish.org.uk>



SCAN ME

Scan to see more of Balbir Singh Dance Company's journey with Beamish Museum, including creative activities, performances and creative collaborations.

Website & Contact:

Beamish Museum:

<https://www.beamish.org.uk>

[healthandwellbeing@beamish.org.uk](mailto:healthandwellbeing@beamish.org.uk)

Balbir Singh Dance Company:

[alphie.bsdc@gmail.com](mailto:alphie.bsdc@gmail.com)

<https://bsdc-blogs.cargo.site>

## Workshop, Art and Dance

From interactive flower painting and creative movement workshops to live dance performances, Beamish Museum creates space for creativity rooted in lived experience. Artists and dancers from diverse backgrounds have brought movement, colour and energy to the museum's historic spaces, transforming streets, cottages and halls into vibrant stages. Beamish has also had the pleasure of hosting community-led projects and exhibitions like 'Our Voices', which capture stories of migration, memory and identity through objects, textiles and personal narratives. Whether through brushstrokes, footwork or storytelling, Beamish continues to honour the voices and creative spirit of the people who shape both its past and its future.