

Wireless Configuration for Windows XP

Introduction

Before being able to use the ITS Wireless signal, you must configure your computer to use the system. A fully compliant 'Wireless MS Windows' machine should have all the necessary software and hardware already installed to achieve this task. Further information on the ITS wireless service can be found at the following location:

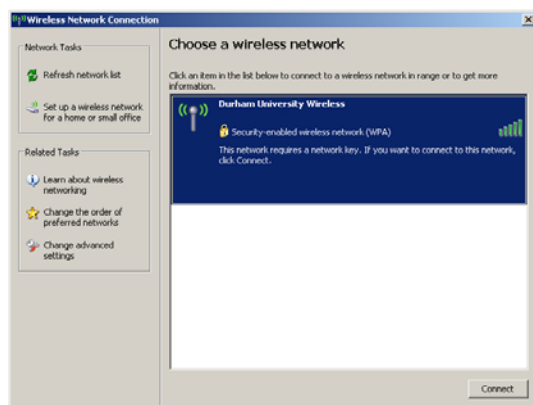
<http://www.dur.ac.uk/its/services/network/mobile/wireless/>

How to configure

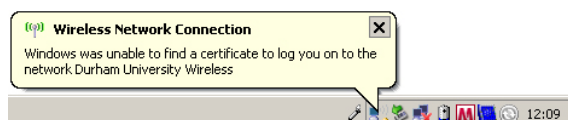
Right click on the wireless icon on your task bar and select **View Available Wireless Networks**.



You will now see which wireless networks are within range, select **Durham University Wireless** and click on the Connect button.

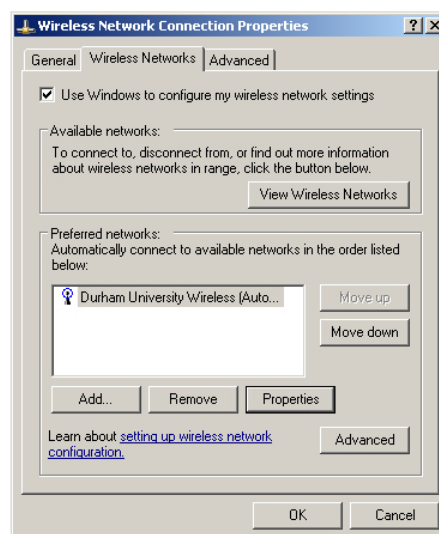


Your computer will display a message which says Windows was unable to find a certificate to log you on to the network Durham University Wireless network.

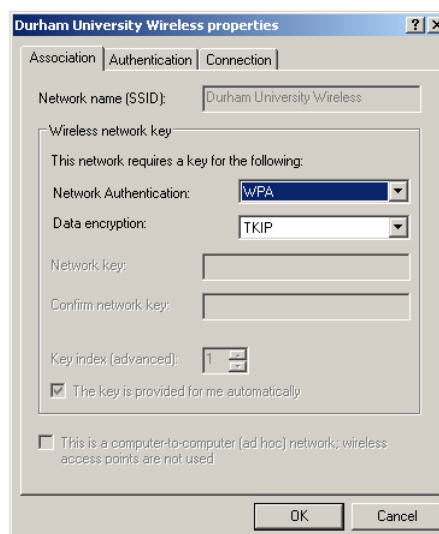


From the Wireless Network Connection window click the link **Change advanced settings**.

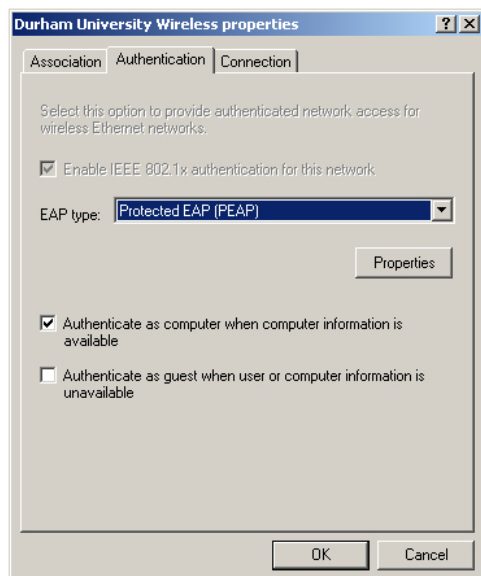
In the Wireless Network Connection Properties window select the **Wireless Networks** tab.



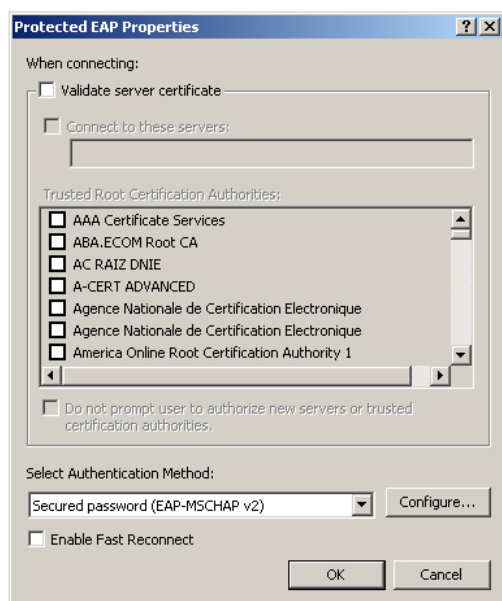
With Durham University Wireless selected in the preferred networks box click the Properties button. Set Network Authentication to **WPA** and Data Encryption is **TKIP**.



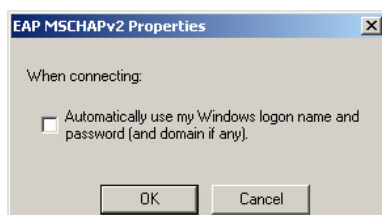
Then select the **Authentication** tab and set EAP type to **Protected EAP (PEAP)**.



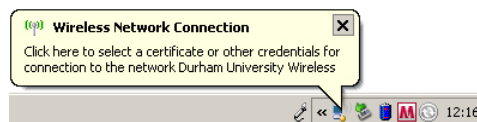
Click the Properties button and take the tick out of the check box beside **Validate server certificate**.



Click the Configure button and take the tick out of the box which says **Automatically use my Windows logon name and password (and domain if any)**.



In a couple of seconds a dialogue box will appear above the Wireless icon on the task bar requesting additional information.



Click the dialogue box and enter your **Durham University username** and **password**, leave the Logon domain box empty and click ok.



The system will authenticate using your Durham University username and password and then the Wireless icon will confirm that you are now connected to the Durham University Wireless system.



In addition to configuring your machine to access the Wireless service, you will need to configure your browser to use the University's WWW cache. Please see the following webpage for further information.

<http://www.dur.ac.uk/its/services/web/browsers/cache>