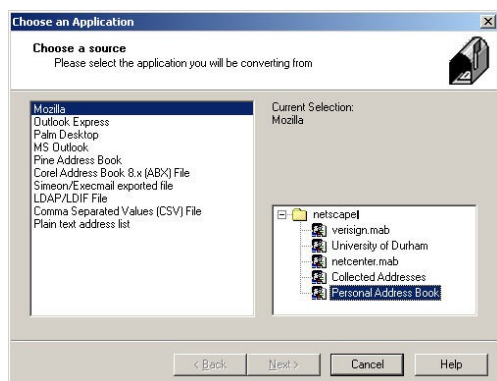


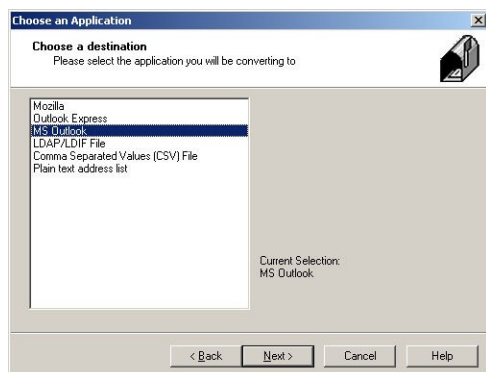
Converting address books for use in Microsoft Outlook 2003

Importing Mozilla address books using Dawn 5

- 1 Using Windows Explorer, go to the Z: drive and double-click the dawn wizard file
- 2 In the Welcome Page dialogue box, click **Next**
- 3 Choose Mozilla from the options listed then select the Personal Address Book option



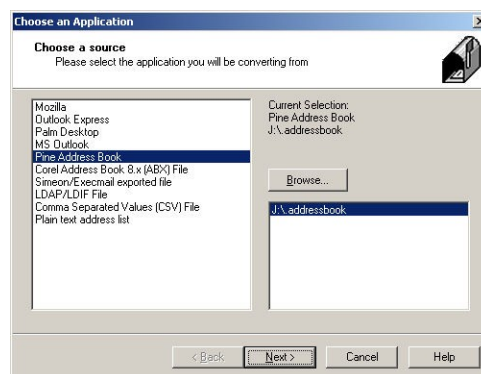
- 4 Click **Next**
- 5 Choose MS Outlook for the destination application



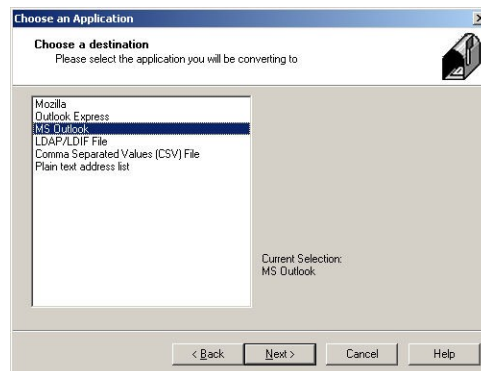
- 6 Click **Next**
- 7 Click **Finish**.

Importing Pine address books using Dawn 5

- 1 Using Windows Explorer, go to the Z: drive and double-click dawn wizard
- 2 In the Welcome Page dialogue box, click **Next**
- 3 Choose Pine Address Book from the options listed then using Browse button to select the .addressbook file on your j: drive



- 4 Click **Next**
- 5 Choose MS Outlook for the destination application



- 6 Click **Next**
- 7 Click **Finish**.

Please note: Dawn 5 does not import mailing lists. You should either move your lists to the Majordomo service - <http://www.dur.ac.uk/its/services/email/lists/majorcool/> or manually populate your lists in Outlook.